

Elsenham Village Snapshots

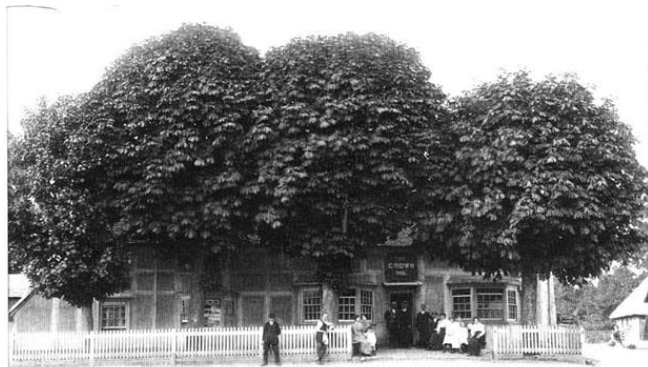
The Crown Inn Elsenham...

... occupies an eighteenth century building thought to have been built in the latter half of the century. Grade II listed in 1974, it is described as "a two storey timber-framed and plastered building with a four window range. The upper floor has small casement windows and the ground floor three canted bays with double-hung sashes with glazing bars". Apart from a kitchen extension to the rear, the building has changed remarkably little since it was built.



The Crown Inn in 1923 with the then proprietor, Charles Gray at the door. Note the horse chestnuts along the front

When first opened it is believed the pub was known as the Rose & Crown but by 1848 had changed its name to The Crown when White's Directory of Essex listed William Henry Bowtell, a horse dealer and victualler as the landlord. At this time The Crown was very important as a stop for coaches going to London, horses were kept there and the Village enjoyed a good service to London. Horses were kept in a barn at the rear of the pub until the mid-nineteen sixties when the then landlord, a Mr Hartley sold his horse. Mr Hartley was an active member of the Village Hunt and resplendent in his hunting red would assemble in the "Crown" yard together with his fellow huntsmen and hounds. The Pack would set off down the hill towards the Church, turning left just after Abbotsford Bridge, crossing into the field behind Elsenham Lake before ranging far and wide in pursuit of its quarry.



For very many years there were four horse chestnuts along the front of the pub and at times these threatened to take over, (see left). They eventually got just too big and were threatening the fabric of the building. They were cut down in 1954 by a local timber merchant.